



SPONGES of Deepwater Communities in the Northwestern Gulf of Mexico

Developed by Flower Garden Banks National Marine Sanctuary

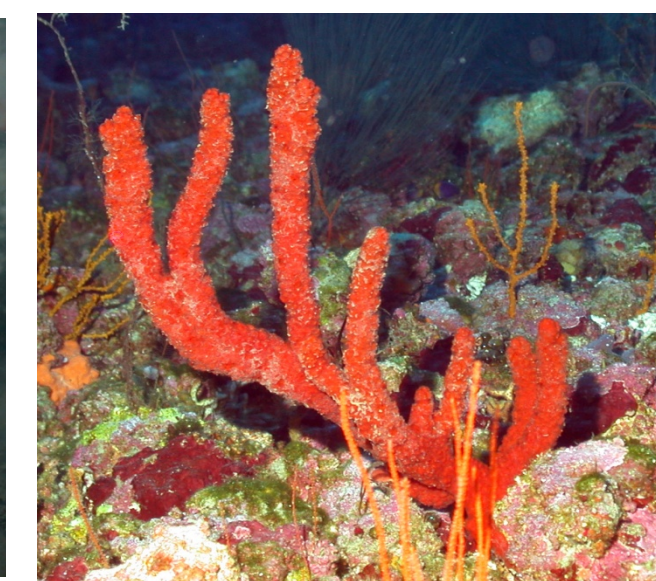
Emma L. Hickerson and G.P. Schmahl

Collaborators: Kyle Byers and Douglas C. Weaver (NOAA/FGBNMS), Lance Horn (NURC/UNCW), Klaus Ruetzler (Smithsonian Institute), Christi Savarese

December 2012



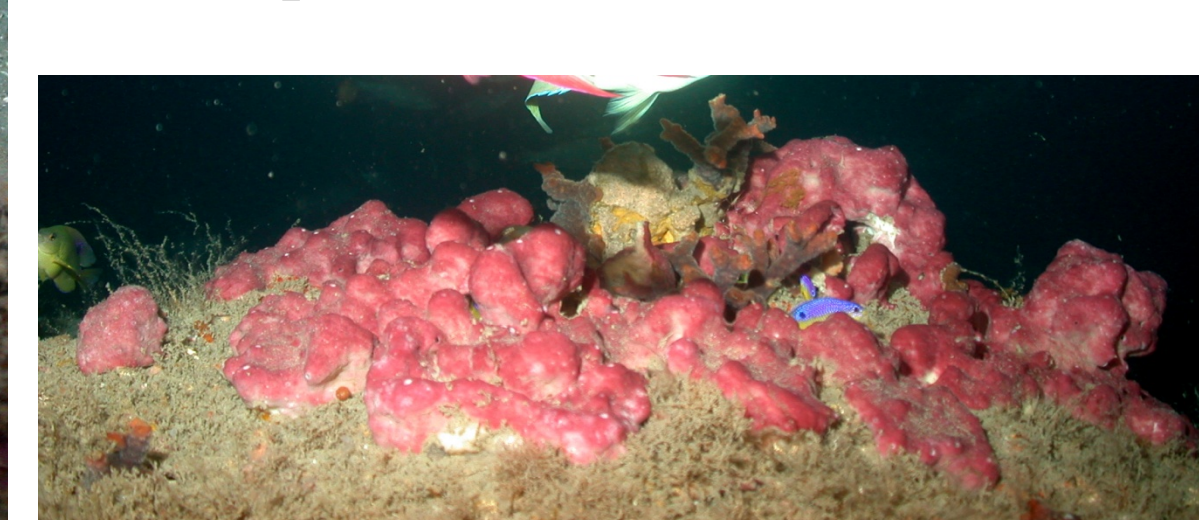
Higginsia coralloides



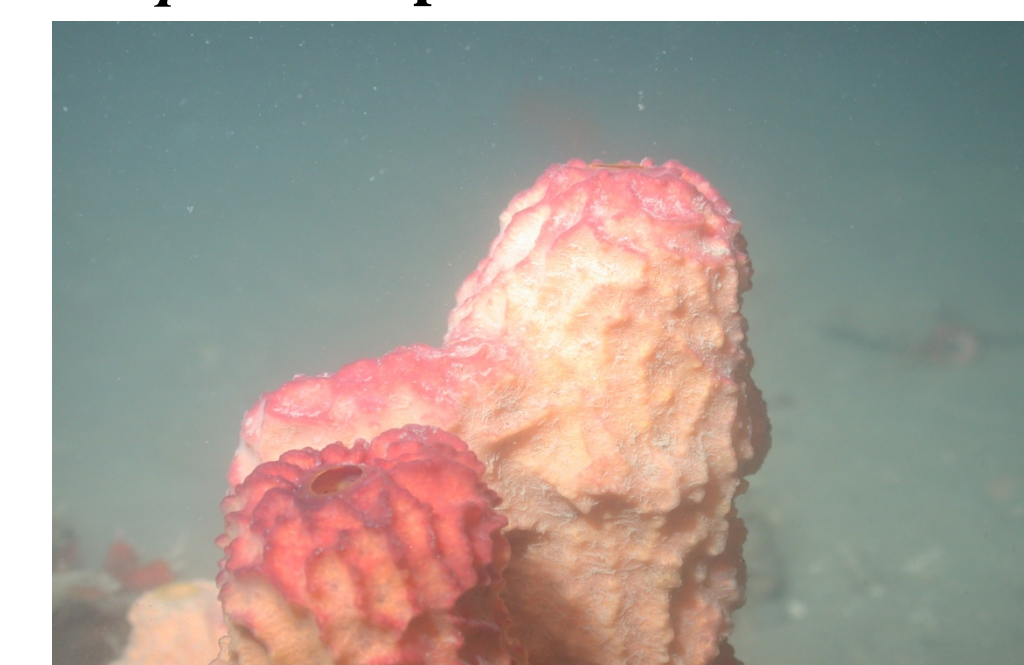
Ptilocaulis sp.



Neopetrosia sp.



Neopetrosia sp.



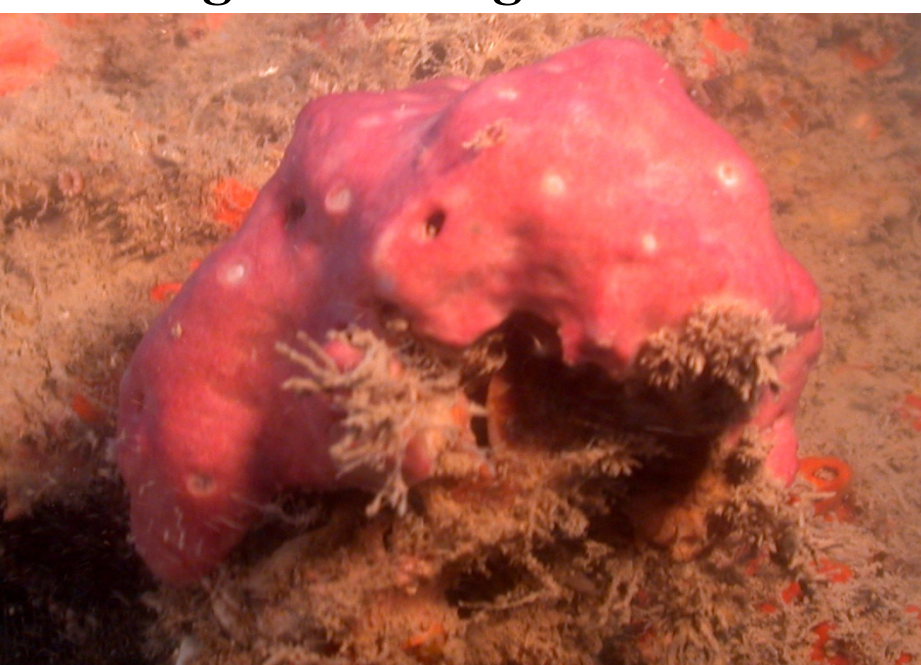
Verongula reiswigi



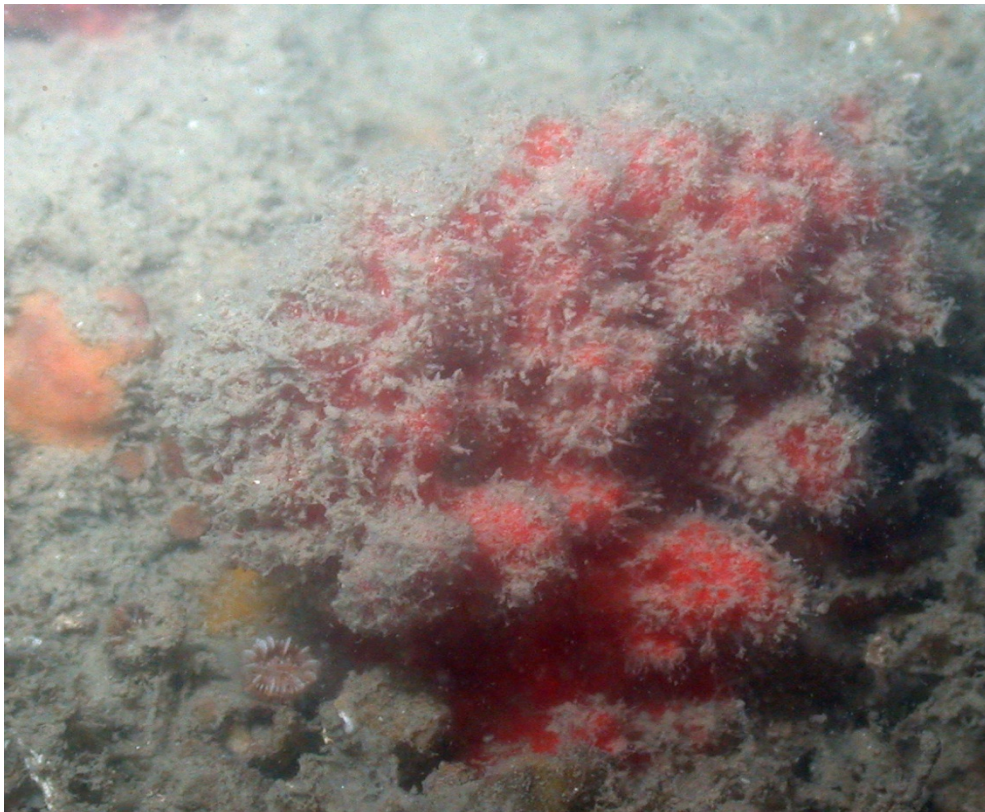
Verongula reiswigi



Ectoplysia ferox



Neopetrosia sp.



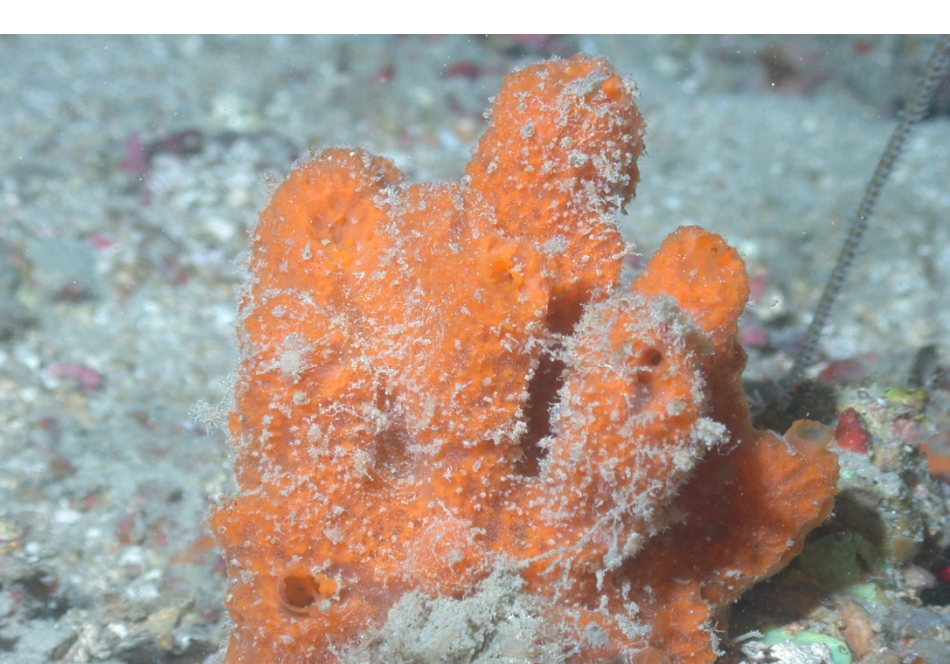
Higginsia coralloides



Agelas cf. *cebrum*



Acanthella cubensis



Acanthella cubensis



Acanthella cubensis



Batzella rubra



Placosphaera antillensis



Placosphaera antillensis



Didiscus oxeata



Myrmekioderma gyroderma



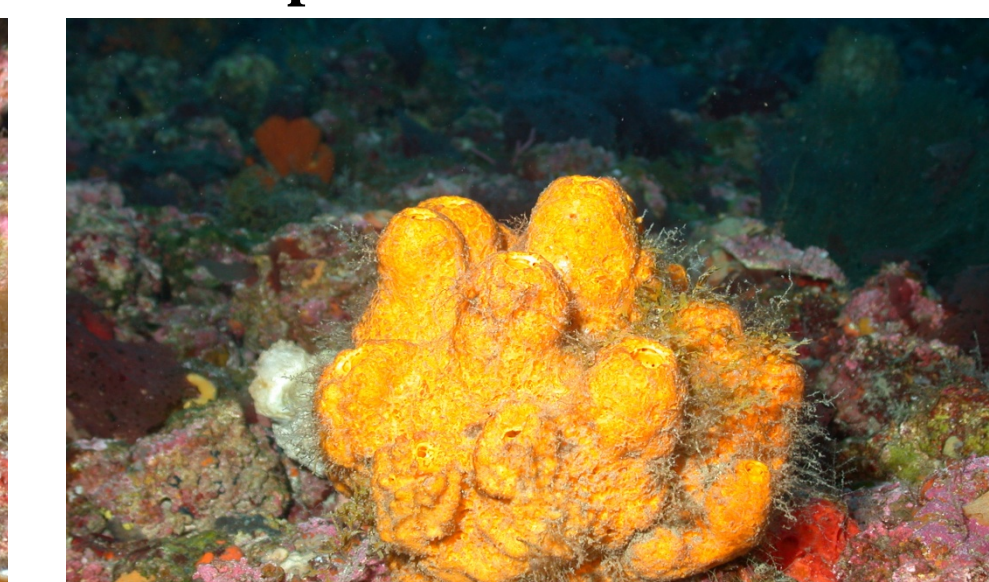
Auleta sycinularia



Halichondria sp.



Halichondria sp.



Halichondria sp.



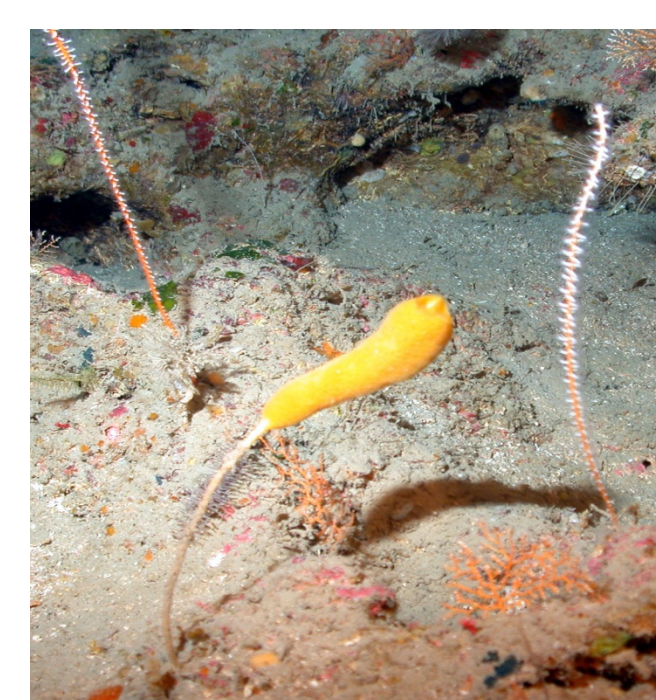
Haliclona sp.



Didemniidae ascidian



Halichondria sp.



Rhizaxinella clava



Myrmekioderma gyroderma



Dictyonellidae



Auleta sycinularia



Smenospongia sp.



Myrmekioderma gyroderma



Didemniidae ascidian



Dysidea sp.



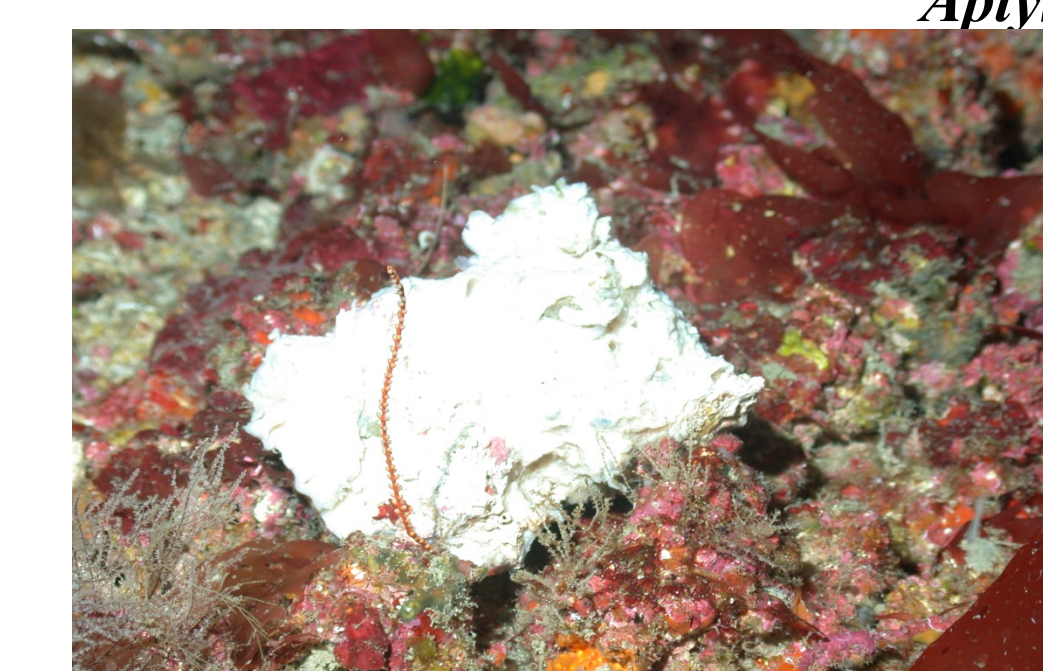
Smenospongia sp.



Axinellidae



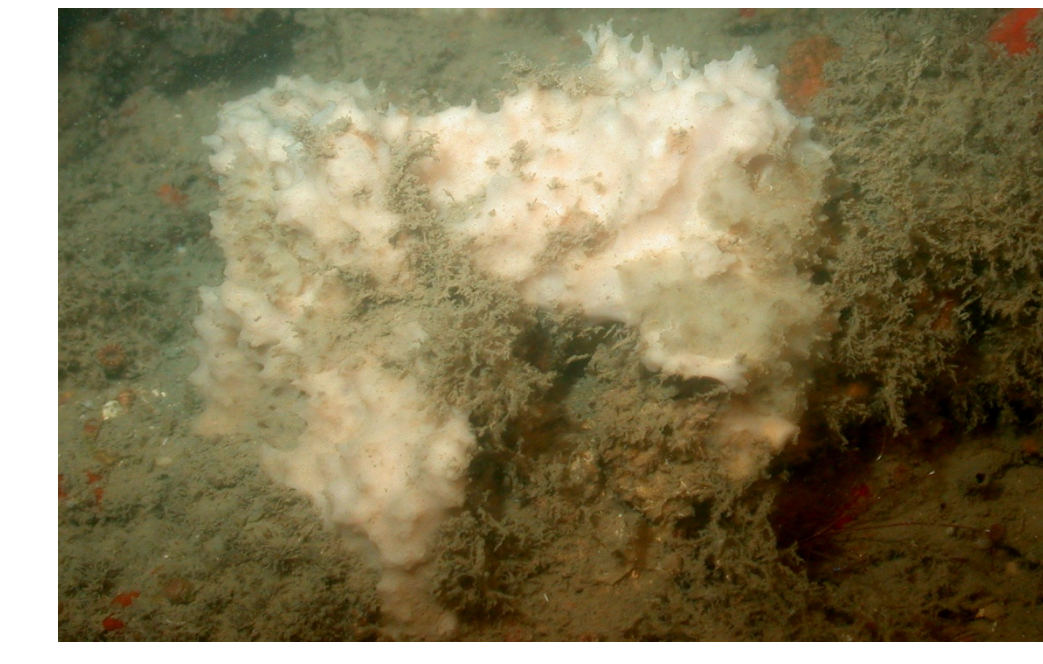
Aplysilla sulfurea



Yucatania sphaeroidocladus



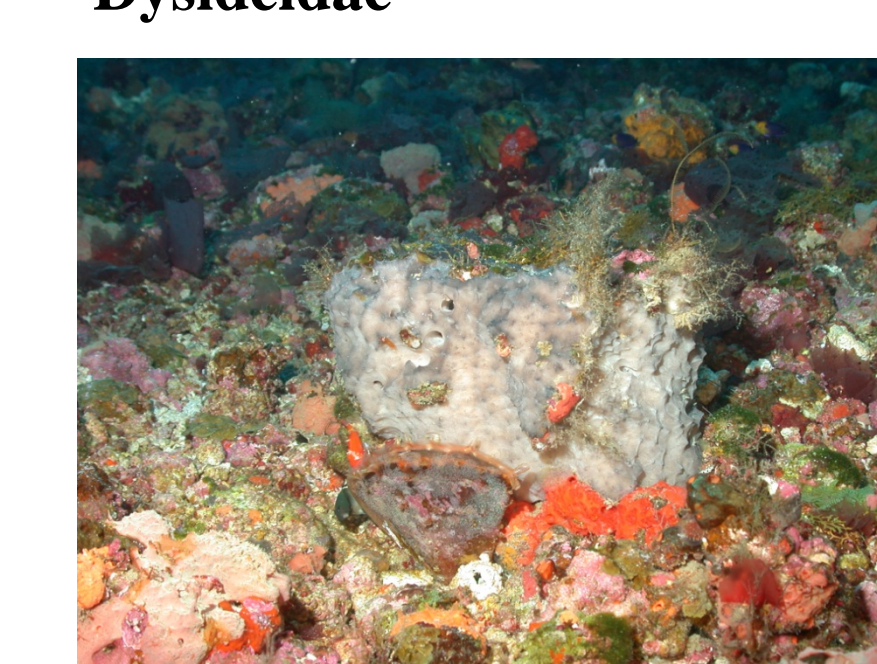
Plakortis zygompha



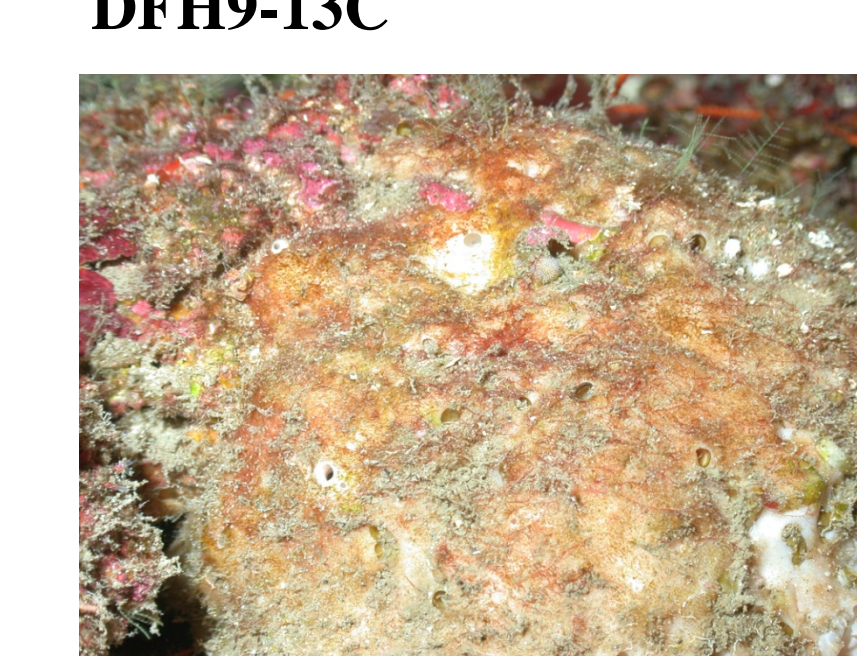
Dysideidae



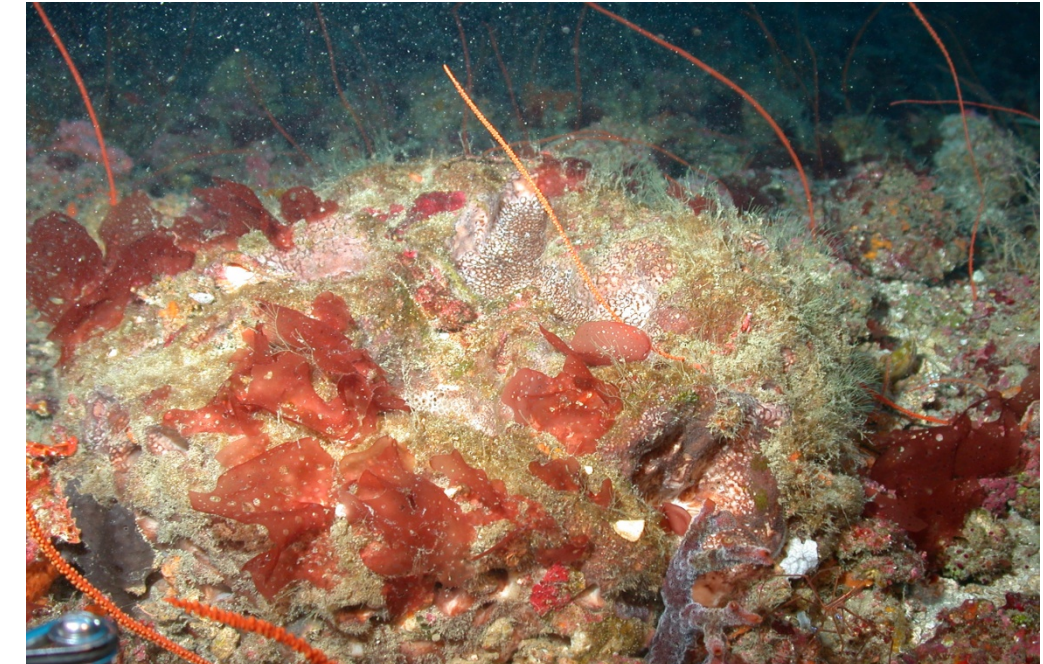
DFH9-13C



Erylus trisphaera



Yucatania sphaeroidocladus



Acornia sp.



DFH9-13F



Chondrosia sp.



Topsentia bahamensis



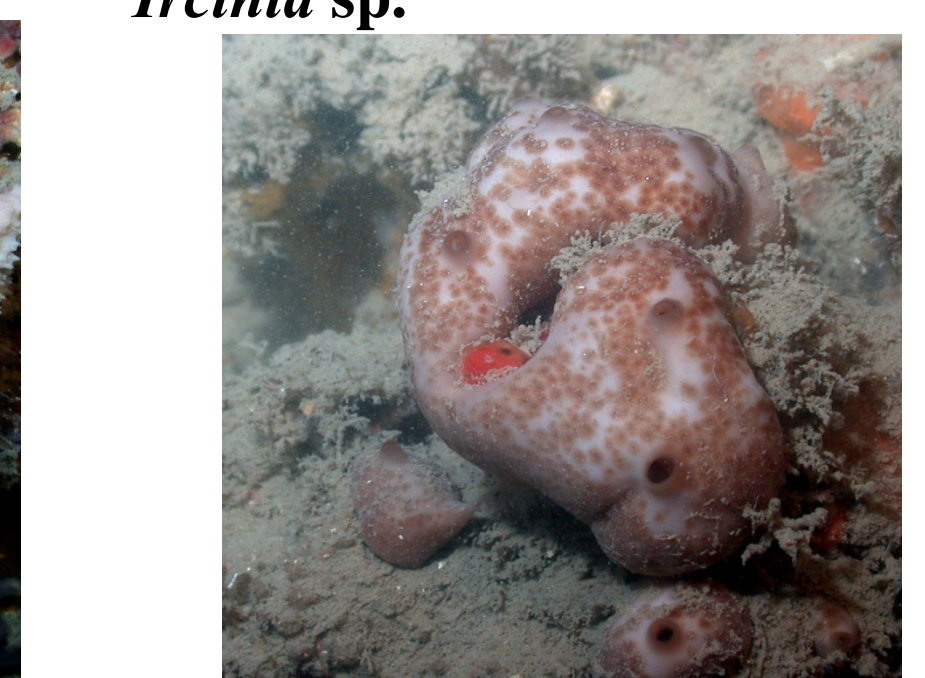
Niphates erecta



Ircinia sp.



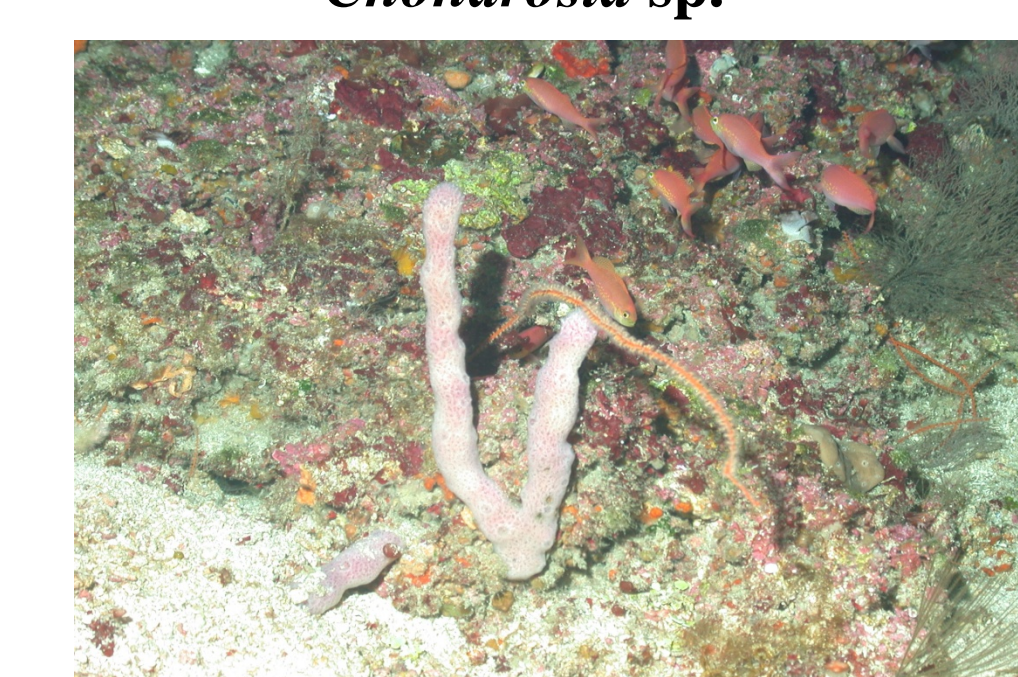
Ircinia sp.



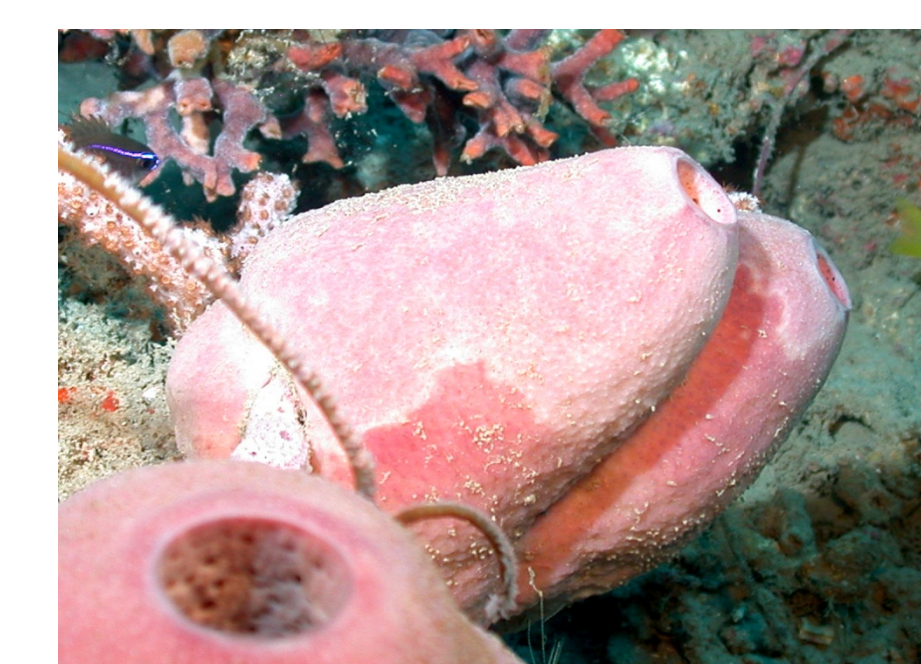
Chondrosia sp.



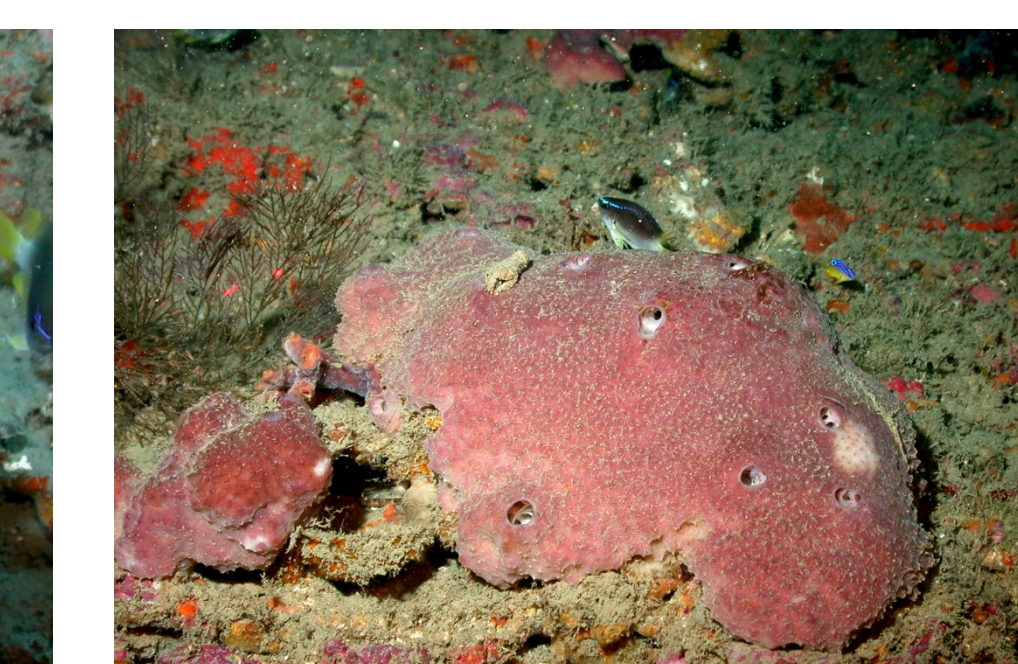
Pleraplysilla sp.



Niphates erecta



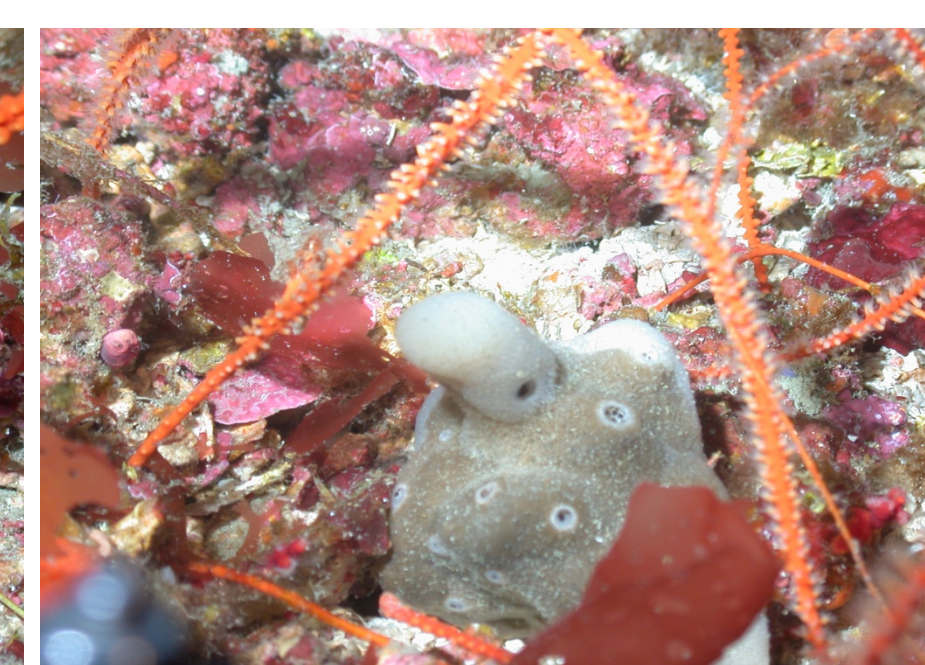
Ircinia sp.



Ircinia sp.



Petrosia sp.



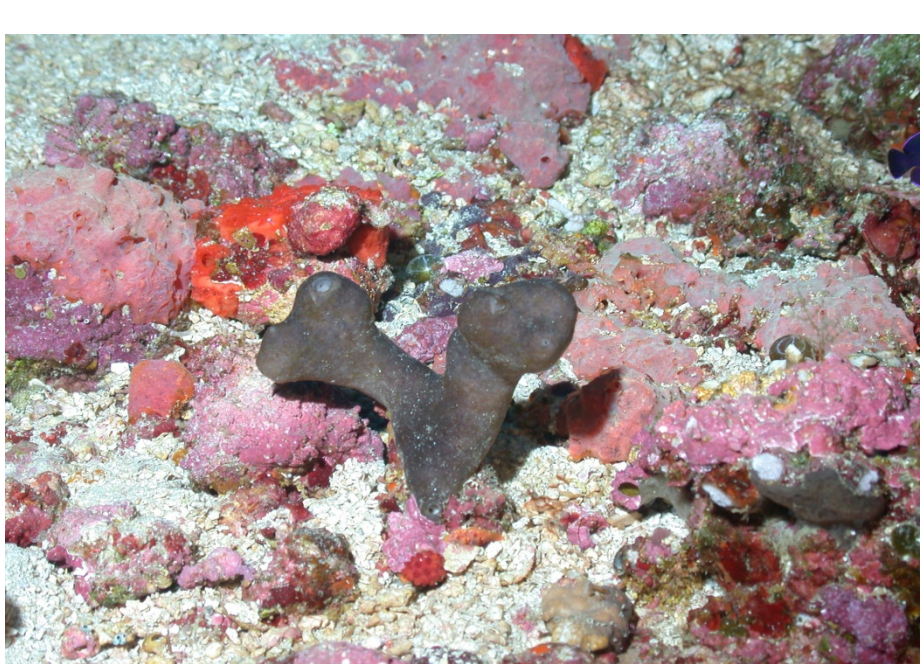
Petrosia sp.



Erylus allenii



Erylus trisphaera



Erylus allenii



Corallistes typus

The majority of these sponges were sampled at the Flower Garden Banks National Marine Sanctuary by remotely operated vehicle at depths between 162 feet and 355 feet.